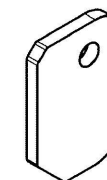


PŘEKLAD

dne 17. 12. 2014

PROVEDL/A

VISNA 7.

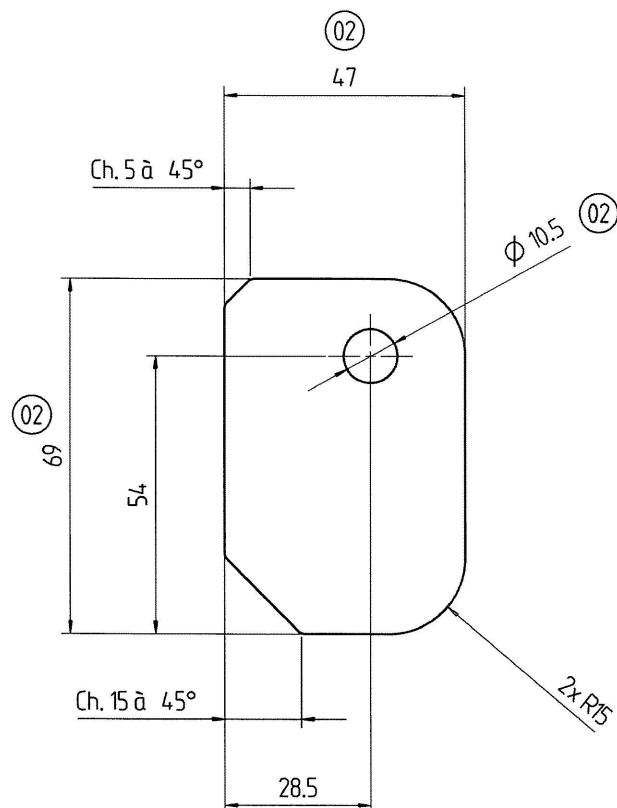


- 2 -03- 2015

ARCHIV

2

✓ NZ 14/01402



THOUSTKA MAT.
NEWST. RADIUS
RADIUS Ø10.5
202 L22ENA DEKA

NOTA :

- Metal sheet thickness : 6 mm
- Radii without dimension : R = 2
- Bend radii : R = 1
- Unfolded length (for info) = 1

Condition at time of delivery	
de-scaled (degree of purity SA 2 1/2 acc. ISO 8501-1)	X
without burrs acc. WN 11310	
Permissible top-end rounding during flame cutting (also positive bead acc. WN 10572)	
oil-free / free of grease	
oiled	
oiling permissible	X
Indicate the required condition at time of delivery with an X.	

02

LASER cutting tolerances				
NOTA : min cutting radius without dimensions R = 1 mm unless otherwise specified				
≤ 30	30 < ≤ 120	120 < ≤ 400	400 < ≤ 1000	1000 <
± 0,5	± 0,8	± 1,0	± 1,5	± 2,0

First angle projection		02		Oiled --> Oiled permissible		T48720	
				Ø9 --> Ø10.5 / Dim. 78 --> 47			
				Dim. 112 --> 69			
General tolerance (GT) in mm		Index		alteration		Change no	
Size range						Fit	
≤ 30 ≤ 120 ≤ 400 ≤ 1000						Toler.	
GT coarse		Inspection dim.		Material: S235JR		Weight: in Kg	
L 1 2 3 4		Auxiliary dim. ()		following EN10025-2		0.3	
≤ 1 ≤ 2 ≤ 4 ≤ 6		Date		Blank no:			
Lengths (L) and angle (L/Δ) = ± GT		Name		Title:		PROD.	
Tolerance Symbols ISO 1101		Drawn 9.1.2014 J.Fonteny		support		Scale	
○ roundness = 1/20-Tol.		Checked 13.1.2014 F.Praust		mounting ring		1:1	
□ straightness/flatness = GT		Auth'd 22.1.2014 R.Pelletier				Sheet:	
⊙ concentricity/run out = GT		M.check 20.1.2014 J.LeCesne				1	
≡ symmetry = GT						of:	
// parallelism = GT						1	
⊕ position = GT							
Languages: en,fr		Confidential document		Drawing number			
		Refer to protection notice ISO 1606		11914010902			
		Repl.		Org.			

Released

11914.010902d001

A3